

Practice News

COVID Update

Please remain assured that our team are still here for you.

! Please let us know if you or anyone on your farm is self-isolating or showing COVID symptoms, so we can take appropriate steps to protect our team.

! Our office is closed to visitors. If you require any medication please give us as much warning as possible. Our med delivery service is still running as normal.

! Please maintain social distancing on farm. If we need to be in closer contact with you, we have PPE with us. Please don't be offended if we ask you to wear some too.

! Health planning and health discussions/prevention protocols will continue over the phone or over zoom; whichever you prefer.

Invoicing Update

We are working with our computer software provider to update our invoice layout with the aim of making them clearer for you. There have been a couple of issues so far. The emailing of invoices isn't working correctly, so this month they have been emailed from a different email address. Please speak to us if you have any concerns. We apologise for the inconvenience.

Medicine Updates

If you are anticipating needing a particular medicine/vaccine the more warning you can give us, the better able we are to make sure we can get it to you on time. You can order it for the following month. We have options in stock for all emergency uses.

Lactating Tubes: Current options: ubrolexin (broad antibiotic cover), Ubropen (narrow antibiotic cover but good for certain bacteria e.g. penicillin sensitive strep uberis, staph aureus. We are hoping to have more alternatives available shortly.

Vaccines:

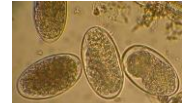
IBR vaccines are currently rep order only, which means the ordering process takes longer than normal.

The ringworm vaccine is in very short supply. It is likely this is going to be long term out of stock in the near future.

Betamox/Duphamox: Currently out of stock. Hoping this will return in March. Please speak to a vet for alternatives if needed.

NADIS Parasite Forecast

WORMS:



Sheep

Worming ewes at lambing is no longer recommended, as it has been found an ineffective way to prevent worm infections in lambs, and increases the chance of resistance developing. Young ewes & those in poor condition may benefit from worming, but checking a worm egg count is a more targeted approach.

Cattle

Treat growing, housed cattle with a clear or white wormer to ensure encysted larvae are killed to prevent a mass emergence of encysted worms in the spring.

History of lungworm on farm? Vaccination provides an effective prevention tool, but careful planning is required to ensure correct



FLUKE:

Fluke risk is generally lower this year, but in flukey pasture and due to the warm wet weather, there is a risk of chronic fluke. Testing or abattoir feedback can help guide treatment.

MITES & LICE

Mite and lice infections are more common in winter. These can cause itchiness and loss of condition. The correct diagnosis is important to make sure the correct treatment is given. Speak to us if unsure.

FOCUS

Ringworm

Ringworm is a fungal infection which can lead to skin lesions, itchiness, hair loss and poor growth. It is primarily spread through direct contact with infected animals or asymptomatic carriers, however the ringworm spores can also survive in the environment for years; commonly brushes, gates, posts, feeding equipment etc.

*****PLEASE BE CAREFUL WHEN HANDLING STOCK WITH RINGWORM AS IT CAN SPREAD TO YOU. WEAR GLOVES.*****

We've found the vaccine the most effective form of treatment & prevention, but the drug company have informed us this is likely to be in short supply for a year or more due to manufacturing issues.



Treatment & Prevention with no vaccine available

- ✓ Isolate infected animals. There is a topical treatment available that can be rubbed into lesions, but unfortunately it cannot be used around the eyes and it is quite labour intensive.
- ✓ Thoroughly clean & disinfect the environment & any equipment used with infected stock. Many disinfectants aren't effective against ringworm so choose one with a high chlorine content. Wooden surfaces can be treated with creosote which helps prevent spore survival.
- ✓ In most cases ringworm is self-limiting, with infection lasting from 1 to 4 months. This is probably partly because the animal develops immunity to it.
- ✓ Reducing stocking density, increasing exposure to sunlight, and reducing environmental moisture all helps. Improving overall health and nutrition helps the individuals become more resistant to infection.
- ✓ Ringworm can take 4 weeks to develop, so isolating incoming stock & monitoring for signs of disease

Farmer Meetings

Unfortunately due the current situation, we are running less farmer events than usual, as we have found more farmers are keen for meetings in person. AHDB are running some really good webinars though, so it is worth keeping an on their website. Our picks this month:

AHDB Cattle Handling – Keep calm & moo-ving

Cattle handling can be extremely stressful for cattle & handler. Better understanding of how cattle think & move will help both you and them have a less stressful experience & help things run smoother & more safely.

MONDAY 8th FEB 7pm – 8.30pm

<https://register.gotowebinar.com/register/5076212500365717007?source=Webpage>

AHDB New Red Tractor Calf Standards & How to Comply

Aim is to eliminate euthanasia of calves by 2023. Webinar will look at breeding options, rearing facilities, market options for calves & managing if under TB restriction.

WEDNESDAY 17th FEB 12pm – 1.30pm

<https://register.gotowebinar.com/register/7536812870501445134?source=Webpage>